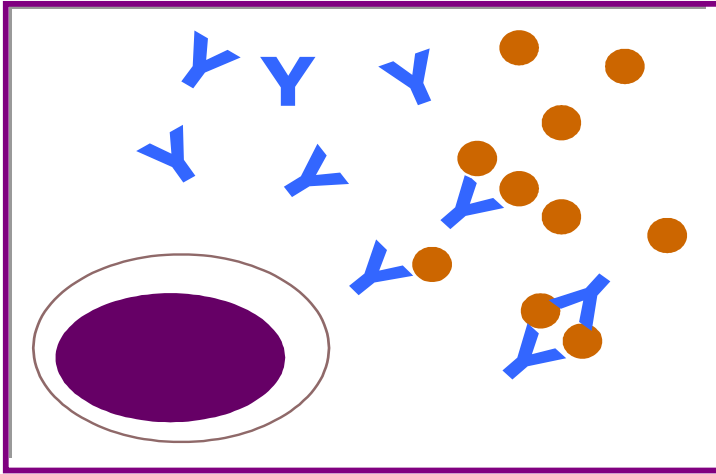


The image features a blue background with several water molecules, each consisting of a red sphere (oxygen) and two white spheres (hydrogen) connected by blue lines. In the center, there is a semi-transparent brown rectangular box with a thin orange border. Inside this box, the word "Immunity" is written in a white, sans-serif font.

Immunity



What is happening here?



Physical and Chemical Defences

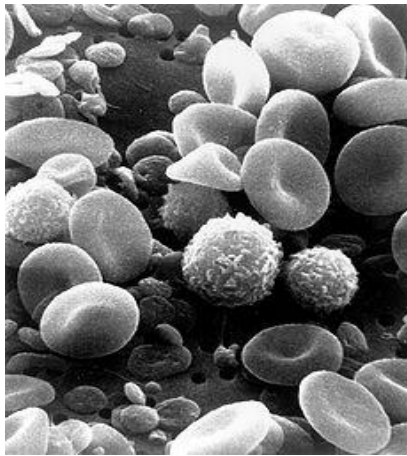
What does this mean?



Self and non self

Why is it important that our bodies can recognise self and non self?

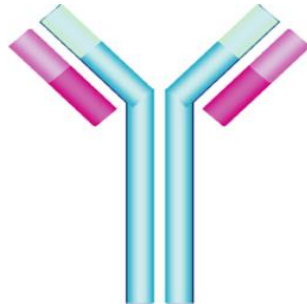


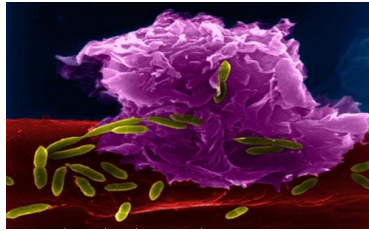


In this image we could describe the white blood cells as undergoing surveillance – what does that mean?



What is the function of this Y shaped protein molecule?





non-specific cellular responses

What role does this have in the fight against infection?



Memory cells

Some T and B lymphocytes survive as long term memory cells.

What role does this have in the fight against infection?



Inflammatory response

What causes this response to infection?

